



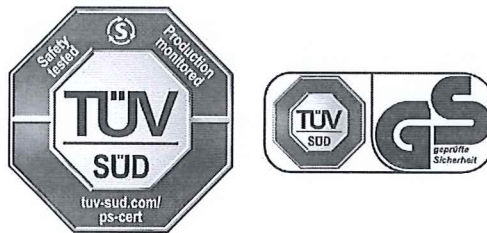
Product Service

CERTIFICATE

No. Z1A 18 03 24133 059

Holder of Certificate: Bellelli S.R.L.
 Via Meucci 232
 45021 Badia Polesine RO
 ITALY

Certification Mark:



Product: Child seats for cycles

Tested according to: EN 14344:2004
 PPP 53332C:2017
 AfPS GS 2014:01 PAK

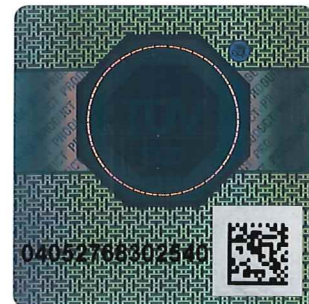
The product meets the safety and health requirements of the German Product Safety Act section 20 to 22 ProdSG. The certification marks shown above can be affixed on the product. It is not permitted to alter the certification marks in any way. In addition the certificate holder must not transfer the certificate to third parties. This certificate is valid until the listed date, unless it is cancelled earlier. See also notes overleaf.

Test report no.: 028-713120141

Valid until: 2023-02-28

i.A. RZT Ziegler
 (Robert Ziegler)

Date, 2018-03-01



Page 1 of 2



Product Service

CERTIFICATE

No. Z1A 18 03 24133 059

Model(s):

Little Duck

Clamping systems:

Standard; Clamp; Relax

Parameters:

Width: 380 mm
Width of the seat area: 280 mm
Height of the backrest: 400 mm
Depth of the seat area: 178 mm
Mounting position: Behind the driver

Seat classification: A22
Colour seat shell: grey, blue, black
Colour footrest: red
Colour cushion: red
Material: PP (Shell)
PP, PE, POM, PC, PA (Add on parts)

Weight without
mounting device,
seat cushion, footrest: 1,4 kg

Standard
(frame mounting): 3,0 kg + 0,5 kg (mounting device)
Relax (frame mounting;
inclinable backrest): 4,1 kg + 0,5 kg (mounting device)
Clamp
(with rack mounting): 2,5 kg

Factory(ies):

24133